

2024 IMPACT REPORT



KEEPING FAMILIES TOGETHER



Saint Francis
MINISTRIES

TABLE OF CONTENTS

Message From Our CEO	2
SFM Advocacy Helps Secure New Legislation	3
1 — What We Do	6
2 — Who We Serve	10
Arkansas	12
Kansas	14
Mississippi	16
Nebraska	18
Ohio	20
Oklahoma	22
Texas	24
3 — Permanency And Prevention: Supporting Families	28
4 — The Journey Continues	34
A Word From Our Board	38
Our Partners	39

MESSAGE FROM OUR CEO



Since our founding, Saint Francis Ministries has been dedicated to second chances and new beginnings. From our fierce belief in the fundamental dignity and worth of every human being, we derive our drive to ensure that no child – or family for that matter – remains defined by their past. On a daily basis, we work diligently to provide a brighter tomorrow for those we serve.

We do that by paying special attention to the need for every child in our care to have a safe, secure, and loving place to belong and reside (Permanency) and to the right of every person and family to acquire the skills and resources they need to heal themselves, regain wholeness, and collectively move forward (Prevention).

This focus requires that we keep a close eye on both past and present so we can support those we serve in crafting a more hopeful future.

Even as we help children, youth, and families create new beginnings through the twin pillars of Permanency and

Prevention, we work to ensure those pillars remain standing strong by strategically planning and preparing for the future. Our Strategic Plan – detailed in this, our 2024 Impact Report – outlines ambitious goals designed to enhance access, performance, culture, and stewardship, ensuring that every child and family we serve can thrive. It is built on the foundation of our enduring values and commitment to transforming both lives and systems.

Thank you for joining us on this journey of service. Your friendship and partnership allows us to continue our essential and life-affirming work in a world desperately in need of healing, hope, and second chances.

May God bless you and keep you.

A handwritten signature in black ink that reads "William J. Clark". The signature is written in a cursive, flowing style.

William J. Clark
President/CEO
Saint Francis Ministries

ADVOCACY HELPS SECURE NEW PERMANENCY LEGISLATION

Saint Francis Ministries' Advocacy Team helped make history this year with the passage of the SOUL Family Option, making Kansas the first state in nation to adopt the permanency option that gives teens 16 or older in foster care the opportunity to obtain legal permanency and transition into adulthood via a custodian of their choice.

Late last year, a delegation from the Annie E. Casey Foundation visited Salina to meet with Saint Francis staff to talk about SOUL Family, an innovative idea that could revolutionize the way providers do permanency in the child welfare system. The idea was so new that Kansas was the only state currently participating – and if Kansas is involved, so is Saint Francis Ministries.

SOUL grew from ideas advocated by young people aging out of the foster care system. Nationally, more than 20,000 teens in

foster care age out without a loving, lifelong family each year. Yet they still need support to successfully navigate the transition into successful, responsible adulthood.

The SOUL Family permanency option would fashion a circle of caring adults to provide Support, Opportunity, Unity, and Legal relationships for young people ages 16 years and older as they move from foster care to adulthood. For youth in foster care, reunification, guardianship, and adoption offer the only legal permanency options. SOUL would provide a fourth option by establishing a legal connection between a young person and at least one caring adult.

"We've been part of this since May 2022," said Vice President of Kansas Permanency Holly Osborne. "We've been meeting regularly with Kansas DCF (Department for Children and





Families), grantees, community members, and young adults with lived experience.”

Saint Francis staff have also been meeting with legislators.

Governor Laura Kelly signed House Bill 2536 into law on May 14, making Kansas the first state to implement the model, which emphasizes maintaining important relationships and avoiding unnecessary separations from familiar environments, such as schools and communities.

“From an advocacy standpoint, SFM utilized multiple strategies to advance this legislation,” said Vice President of Advocacy Matt Stephens. “Our own Holly Osborne and Jennifer Walters served on the task force established to support the effort.

We also engaged in informal conversations with lawmakers to highlight the potential positive impact of the proposed legislation and provided written testimony to advocate for the bill.”

“It is truly exciting to see legislation passed that directly benefits the teenagers we serve,” added Stephens. “The passage of this bill is a clear signal that the Kansas Legislature is not only willing to hear from experts in the field but to also actively listen to constituents with lived experiences. This positive step forward should inspire continued collaboration and advocacy, encouraging even more innovative and impactful legislation in the future.”

NATIONAL STATISTICS

381,176

youth entered into foster care

33%

of youth in foster care
experience two
placements in a year

47%

of youth exiting foster care are
reunited with their parents



90%

of youth who received Family
Centered Treatment® services
successfully remained
with family

24%

fewer youth in
residential placement
when receiving
FCT services

95%

of families receiving FCT services
report having a “better handle on
their family problems”

Source: The Annie E. Casey Foundation, FamilyCenteredTreatment.org



1

WHAT WE DO

OUR MISSION

Providing healing and hope to children and families.



OUR VISION

Transform lives and systems.

“There comes a point where we need to stop just pulling people out of the river. We need to go upstream and find out why they’re falling in.”

— ARCHBISHOP DESMOND TUTU

OUR VALUES

Rooted in faith, our values reflect an abiding respect for the dignity of every human being.



Integrity



Quality



Respect
& Dignity



Empower
Change



Innovate

OUR PURPOSE

Saint Francis Ministries began nearly 80 years ago as a home for troubled boys in rural Kansas. Today, we serve more than 12,000 boys, girls, and families in seven states – Arkansas, Kansas, Mississippi, Nebraska, Ohio, Oklahoma, and Texas - with a full range of programs and services, many of them preventive in both nature and design. Recognizing and honoring the uniqueness of each family and individual, we don't follow a one-size-fits-all philosophy. Rather, we focus on providing healing and hope to children and families because we believe that strong families make children's lives better.

Our focus on healing and hope enables us to achieve our vision of transforming lives and systems. One of the best ways to achieve our vision is by using Prevention programs and services to empower families with the skills and tools they need to heal and regain wholeness. We don't want to simply support kids in foster care, we want to keep them from entering foster care in the first place. Yet, when they do end up in foster care, we work hard to find Permanency solutions that protect kids, serve their well-being, and mitigate the trauma of separation from their families and local communities. The strongest families are those equipped with the coping strategies and communication skills they need to remain safely together, and Saint Francis gives them those strategies and skills.





SAINT FRANCIS STATISTICS



12,176

**INDIVIDUALS
SERVED**



915

**FAMILIES
SERVED**



11,100

**YOUTH
SERVED**



2

WHO WE SERVE



WHO WE SERVE

Young people dealing with trauma and needing a safe place to land until they can return to their families or find a forever family through adoption; adults and youth struggling with addiction; families dealing with stressors like poverty and generational trauma; men and women hoping to be better spouses and parents; adults with intellectual and developmental disabilities who want to work and live independently; and families hoping to heal and stay together – this is who we serve.

Every day, about 1,700 Saint Francis employees work to help make life better for those in our care. Every day, social workers, therapists, case workers, and support staff dedicate themselves to changing the world one child, one youth, one family at a time on a daily basis. We are a ministry of second chances because redemption is in our DNA. We've seen second chances change lives in beautiful ways.



WHO WE SERVE

ARKANSAS



Arkansas – The Natural State

Saint Francis' Intensive In-Home Services focus on keeping families together. We serve dozens of Arkansas counties, helping families develop the solutions and skills they need to reduce risks in everyday situations. Integral to our Intensive In-Home Services is Family Centered Treatment®, an evidence-based model that focuses on working with the family to build a stable, healthy future. Families learn to build upon their existing strengths so they can better provide for the health and security of their children.

Families needing In-Home Prevention Services are referred to Saint Francis by the Arkansas Department of Human Services. Our program enables clinicians to directly observe families where family members are most comfortable – at home, in a familiar environment. Interacting with family members within their natural setting makes it possible to directly intervene in unhealthy behaviors and to immediately reinforce positive, healthy life choices.

 **277**
FAMILIES
SERVED THROUGH IN-HOME PREVENTION

 **94%**
OF FAMILIES
STAY TOGETHER
AFTER RECEIVING PREVENTION SERVICES NATIONALLY



WHO WE SERVE

KANSAS

Kansas: Oh, Give Me a Home ...

Saint Francis Ministries started in Kansas in 1945, and we continue to have our largest footprint in the Sunflower State. Today our ministry includes foster care, adoption, family preservation, behavioral health, residential programs, human trafficking prevention, Family Centered Treatment®, Seeking Safety®, Fatherhood FIRE, and Independent Living.

Whether a child needs a safe place to stay, a permanent forever family, a temporary place where they can receive treatment for substance use or trauma, or simply a family healed and better equipped to nurture and care for them, our programs and services are dedicated to making home a safe place for kids.

From 15 sites throughout the state, including our corporate office in Salina, we provide programs and services for children and families in the central and western two-thirds of the state.



314

**CHILDREN
FOUND A FOREVER HOME**



764

**CHILDREN
REUNITED WITH FAMILY**



4,838

**CHILDREN
IN FOSTER CARE SERVED**



WHO WE SERVE

MISSISSIPPI



Mississippi: A Bridge to Independence

Our Bridgeway residential program in Picayune provides supervised, shared, and supported living, supported employment, and job discovery services to adults with intellectual and developmental disabilities (IDD), so they can live and work as independently as possible. Adults ages 18 years and older with IDD are eligible for residency and services.

Our Day Services – Adult program in Picayune serves Pearl River and Hancock Counties by providing adults with IDD regularly scheduled, individualized activities in a non-residential setting outside the home. All our Mississippi programs honor the dignity of those we serve by helping them live and work as independently as possible so they can chart the course of their own lives.



54
ADULTS SERVED
IN MISSISSIPPI RESIDENTIAL SERVICES



WHO WE SERVE

NEBRASKA

Nebraska – Planting Hope, Harvesting Healing

Hard work, caring for the community, strong family ties, and doing what’s right are typical Nebraska values shared by Saint Francis Ministries. Those values are reflected in the programs and services we provide, especially in the Cornhusker State: foster care, family preservation, Fatherhood FIRE, and Family Centered Treatment®.

Again, we believe strong families make children’s lives better, so we work to build up families and help them acquire the skills and tools they need to remain whole and healthy. And when those families are too broken for the children to safely remain, we ensure they are nurtured and protected until they can find a permanent new home.

That’s caring for community. That’s doing what’s right, and we do it from our sites in Grand Island, North Platte, and Omaha.



482
CHILDREN
IN FOSTER CARE SERVED



312
YOUTH
SERVED THROUGH
IN-HOME PREVENTION



116
FAMILIES
SERVED THROUGH
IN-HOME PREVENTION



WHO WE SERVE

OHIO



Ohio – Midwest Values

As in Arkansas, Ohio has partnered with Saint Francis to help keep families together, which is key to our prevention strategy. From our office in Cincinnati, we will soon provide Intensive In-Home Services through Family Centered Treatment®, the same evidence-based model that we use in Arkansas, Kansas, Nebraska, and the Texas Panhandle.

FCT focuses on working with families to build stable, healthy futures. Families learn to build upon their existing strengths so they can better provide for the health and security of their children.

We're just getting started in the Buckeye State, but we anticipate great things in 2024 and beyond.



WHO WE SERVE

OKLAHOMA



Oklahoma: A Safe Place to Land

Children come to foster care from all walks of life and from every community. Many have experienced trauma, so they arrive frightened, confused, and anxious. Most enter foster care due to abuse or neglect, while others exhibit behavioral disorders.

From our offices in Oklahoma City and Tulsa, Saint Francis Ministries provides foster care in Oklahoma for children in need of a safe place to stay and a family to provide for their emotional, educational, medical, and behavioral needs.



146
CHILDREN
IN FOSTER CARE SERVED



WHO WE SERVE

TEXAS

Texas: Big State, Big Plans

Last year, Saint Francis Ministries brought the very first Qualified Residential Treatment Programs (QRTP) model to the Texas Panhandle to create greater access to a higher level of care for youth with immediate mental and behavioral health needs. This year, Saint Francis purchased the entire Brentwood campus, site of our QRTP, and began the renovation of multiple structures in preparation of consolidating all our Panhandle programs and services in one location.

Located in Lubbock, Brentwood provides residential care, while our foster care and Family Centered Treatment® programs in Lubbock and Amarillo serve children and families in both the home and the community. Saint Francis Ministries proudly serves 41 Panhandle counties as the Single Source Continuum Contractor (SSCC) provider. This year, Saint Francis also entered into a partnership with the State of Texas to serve children and families in Central Texas. From our office at St. Alban's Episcopal Church in Waco, Saint Francis will provide Foster Care and In-Home Prevention services, using the evidence-based model, Family Check-Up®.



240

CHILDREN

FOUND A FOREVER HOME



225

CHILDREN

REUNITED WITH FAMILY



1,731

CHILDREN

IN FOSTER CARE SERVED



Permanency and Prevention Come to Central Texas

Nearly 75 guests and staff attended the grand opening of Saint Francis Ministries' new office in Waco, Texas, in July 2024. The occasion featured a ribbon-cutting ceremony, remarks from invited guests, and a special blessing and dedication followed by a light lunch.

Recognizing the need to strengthen communities in Central Texas, Saint Francis had spent the previous year learning, connecting, and researching how the organization can best serve and support the tremendous work already in progress in Texas. Those efforts have resulted in a new office and services in Central Texas, located at St. Alban's Episcopal Church in Waco.



"The restoration of the family is not best left to government, it is best left to the church – and that's why Saint Francis, as a faith-based organization is so important."

– Senator Brian Birdwell, Texas State District 22

Saint Francis' presence in Waco will support the needs of children and families throughout Central Texas through foster care and in-home prevention services. Saint Francis Ministries was one of 15 organizations to receive a Texas Home Visiting (THV) grant award from the Department of Family and Protective Services in April 2024, and the team has already begun using the Family Check-Up® evidence-based practice in both Bell and McLennan Counties as part of the Home Visiting Program. Like Family Centered Treatment®, Family Check-Up® offers a family-centered and strengths-based approach to mindful parenting, tailored to family strengths and needs. Delivered directly in the home, it enables clinicians to directly observe families where members are most comfortable – at home.

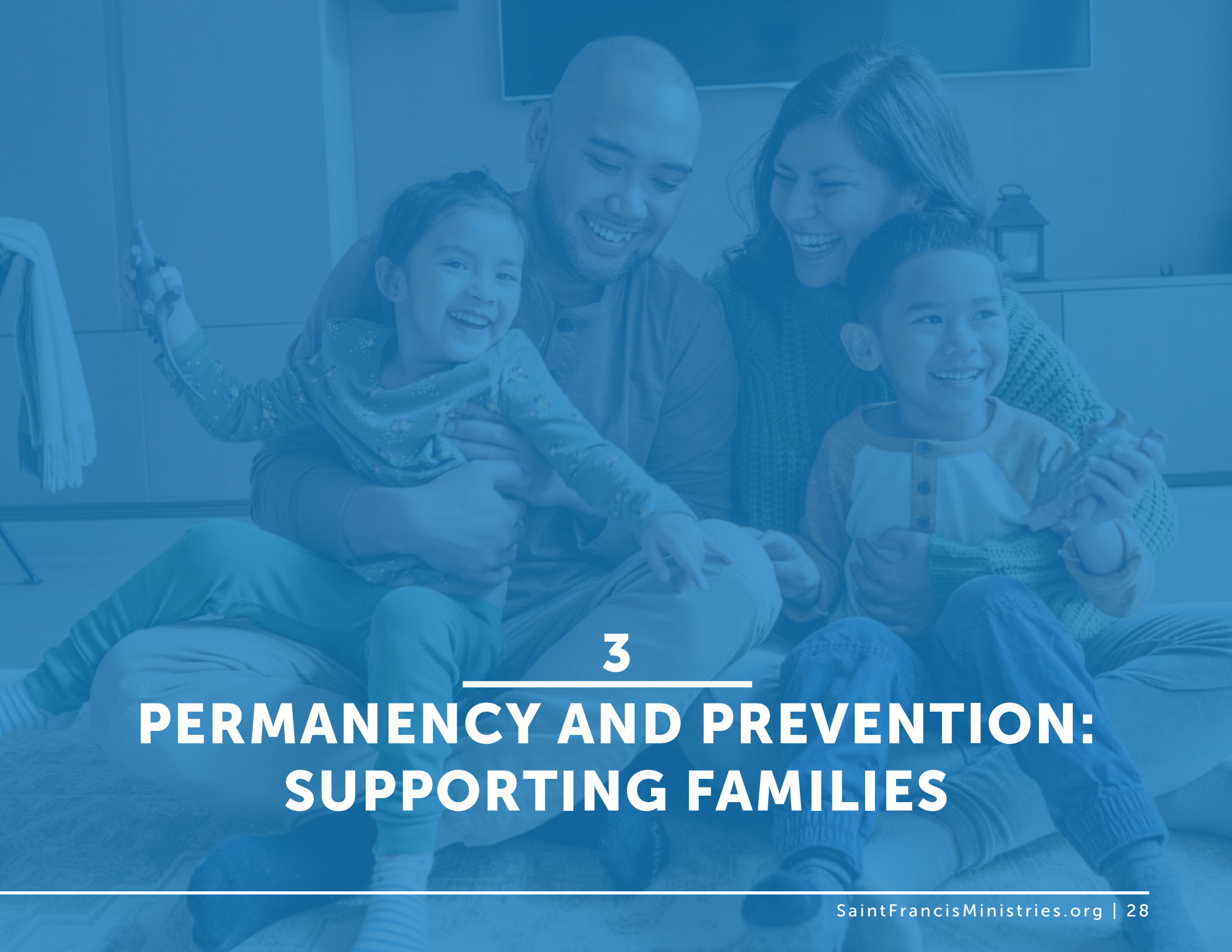
The open house event included remarks by Texas State Senator Brian Birdwell, CEO William Clark, Board of Directors Member Heather Zdancewicz, Foster Care Homes Director Lori Fergueson, and Texas Home Visit Program Director Katherine May.

Saint Francis Ministries stands poised to do great things in Central Texas on behalf of children and families.



“We are thrilled to expand our mission to Central Texas and honored to join these vibrant communities. We look forward to working together to create stable and loving environments for vulnerable children.”

– Cristian Garcia, Chief Program Officer



3

PERMANENCY AND PREVENTION: SUPPORTING FAMILIES



Permanency is the First Step toward Safety

In child welfare, permanency describes a stable living situation that is intended to be permanent and ideally preserves family connections. Permanency is a concept that's considered crucial to child well-being, along with child safety. Planning begins when a child enters the child welfare system and is often achieved when a child is reunited with their family of origin. However, permanency can also be achieved through other court-mandated goals, such as adoption or guardianship.

Foster Care Case Management

Foster care case management involves coordinating and overseeing the care and well-being of children and their families involved in the foster care system, and includes assessment, placement, case planning, monitoring, support, advocacy, and planning for permanency.

In Kansas, Saint Francis Ministries provides comprehensive case management and permanency services to children and families through our Reintegration/Foster Care/Adoption (RFCA) programs. Local Department for Children and Families offices refer children in need of out-of-home placement. Each child and family's situation and needs are immediately assessed, and children are placed in the least restrictive environment possible while maintaining connections with family, kin, school, and home community.

In Texas, we provide stability, permanency, and safety to children and families as a Single-Source Continuum Contractor. We work with more than 130 agencies across Texas to ensure children are placed in safe and caring placements and families are able to receive services to address the concerns which led to their children being removed from the home.

Prevention is the First Step Toward Healing

Saint Francis Ministries' prevention programs honor the dignity of those we serve by guiding them through the difficult work of healing, recovery, and renewal.

Each prevention service provides the skills and support families need to remain whole and manage future challenges. Each builds upon their strengths and capabilities to resolve issues that place children at risk.

Our efforts help families better provide for the health and security of their children. Through prevention, we can create positive change – and positive change helps families stay together.

In-Home Prevention Models

Integral to our Intensive In-Home Prevention services are Family Centered Treatment® and Family Check Up®, evidence-based models of intensive in-home treatment that focus on working with the family to build a stable healthy future.

Both models enable clinicians to directly observe families where members are most comfortable – at home. Interacting with family members within their “natural” setting makes it possible to directly intervene in unhealthy behaviors and to immediately reinforce positive, healthy life choices. Saint Francis provides Family Centered Treatment® in Arkansas, Kansas, Nebraska, Ohio, and the Texas Panhandle. Our Central Texas program utilizes Family Check Up®.



“National research indicates that 98% of all families that successfully complete FCT are still together one year later.”

– Dr. Nicole McCauley, Vice President of Prevention

Seeking Safety®

Seeking Safety is another cornerstone of Saint Francis’ In-Home Prevention Services toolbox. An extremely flexible, evidence-based model designed to help individuals with a history of trauma and substance misuse, Seeking Safety is available in Kansas, and offers 25 treatment topics focusing on cognitive, behavioral, and interpersonal issues. Since implementation, Seeking Safety has resulted in a 99% success rate in maintaining children at home during service delivery. During the year following referral, children remained in the home more than 91.8% of the time.



59

FAMILIES

**SERVED THROUGH
SEEKING SAFETY**



Fatherhood FIRE

A federally funded grant program, Fatherhood FIRE focuses on teaching men and women the skills they need to be better parents. Comprised of five distinct courses, Saint Francis Ministries provides the program free of charge in Kansas, Nebraska, Oklahoma, and Texas. Fatherhood FIRE supports stronger families by helping parents build relationships with their children, educating parents involved in domestic violence, and assisting families in achieving economic stability.



Behavioral Health

Accessible both remotely and in-person, Saint Francis Ministries Outpatient Behavioral Health department has offered healing and hope to individuals and families for more than two decades. Behavioral Health provides treatment and support for a wide variety of issues, including alcohol and drug counseling and outpatient services. All of our behavioral health programs are designed to meet the unique needs of both adults and adolescents.

Anchored by our Psychiatric Residential Treatment Facility (PRTF) and two Qualified Residential Treatment Programs (QRTP), Saint Francis provides compassionate, clinical care for children with both short-and long-term needs. Our QRTPs provide them with a safe place to stay where they have time to work on these behaviors within a home-like environment. Other residential services feature a range of treatment tools that include art therapy, equine therapy, and modalities. Each is designed to help youth overcome mental health and behavioral health struggles, so they can return to their families and communities to lead healthier lives.





4

THE JOURNEY CONTINUES



Looking Forward

Over the next seven fiscal years, FY25-FY31, Saint Francis Ministries will expand our core services to new locations, enabling the organization to increase its overall impact for children and families. Led by the four strategic pillars of Access, Performance, Culture, and Stewardship, we intend to deepen our partnerships with stakeholders and colleagues to transform lives and improve social systems.

Along the way, Saint Francis will greatly enhance our overall employee experience, improve our internal systems and infrastructure, and significantly increase our philanthropic reach to enhance support for children, families, and our team members.

By leading innovatively now, Saint Francis Ministries intends to guide our Mission and Vision into the future through faith, values, operational vision, and aligned operations.

Improved systems and changed lives will define our success.



Recognized for transforming lives and systems at the community, state, and national levels.

OUR BIG 5



Program Delivery

"Why" We Exist

Healing & Hope to Children
& Families (Mission)



Care & Development

"How" we fulfill our "Why"

Our People
#1 strategic priority



Culture

"Who" We Are – Inside & Outside

Stakeholders &
colleagues transform
systems



Financial Stability

Fiscally Responsible

Positive cash flow &
live within our means



Moderated Growth

Increase our Impact/ Secure our Future

Thoughtful, planned,
& resourced expansion

SAINT FRANCIS MINISTRIES – TOMORROW

Where We Are Going
FY2031

\$300
Million

Multi-faceted child, adult, and
family services organization

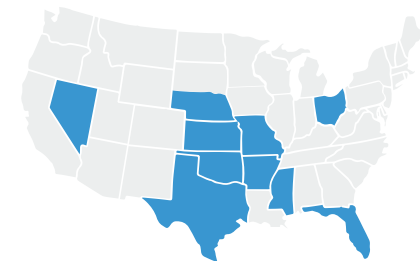


15,000+

People Served Annually

Across 10 States

Arkansas, Kansas, Mississippi, Nebraska,
Ohio, Oklahoma, and Texas



Targeted Expansion – NV, FL, MO

MESSAGE FROM OUR BOARD CHAIR



As chair of the Saint Francis Ministries Board of Directors, I've had the privilege of working with a group of leaders and staff dedicated to the health, happiness, and well-being of struggling young people and families.

Along the way, those same people have inspired me with a passion and professionalism that is laser-focused on finding the most innovative, compassionate, and proactive ways to help families heal and remain whole ... because, as we like to say at Saint Francis, "strong families makes children's lives better."

In my other job as a hospital administrator, I've learned the importance of prevention in both physical and mental health. That's why I'm so proud of Saint Francis' dedication to helping kids in care find permanency – a safe, secure, loving place to stay – and in helping families heal and overcome challenges before children are removed from the home.

Saint Francis Ministries wants families to remain together

whenever possible – and when they can't, we want to keep their kids safe.

So, as we work to ensure that Saint Francis remains viable well into the future through our Strategic Plan Initiative, we do so with an eye towards Permanency and Prevention. Every child removed from their home experiences trauma, and we want to mitigate and help heal that trauma or avoid it altogether.

That's why your support is so vital. Thank you for friendship and for helping us serve the children and families in our care. Together, we are making the world brighter for those who need it most.

In peace,

A handwritten signature in black ink that reads "Brock Slabach". The signature is written in a cursive, flowing style.

The Reverend Brock Slabach
Board of Directors Chair
Saint Francis Ministries

THE SAINT FRANCIS FOUNDATION, A WORLD OF GOOD

The philanthropic arm of Saint Francis Ministries, the Saint Francis Foundation supports our mission through the cultivation of friendships and partnerships — in states where we serve, within the wider church, with governmental agencies, and with other child and family welfare non-profit organizations.

We could not achieve our mission without our community partners. United in a shared desire to make life better for others, we provide healing and hope to those in our care – together.

What you give to Saint Francis— through a financial contribution, or an in-kind donation, or with the gift of your time — does a world of good. You can serve people in the greatest need through programs that save, enrich, and restore lives.

To partner with Saint Francis Ministries in our life-affirming work, visit SaintFrancisMinistries.org/Foundation.



GINNY ELLIS
Executive Director of Development

Saint Francis Ministries Foundation

806.746.2085

Ginny.Ellis@St-Francis.org

SaintFrancisMinistries.org/Foundation

Saint Francis Ministries Headquarters

800.423.1342

SaintFrancisMinistries.org

110 W. Otis Ave., Salina, KS 67401



Scan to Donate



MEET OUR PARTNERS

ACF Tx Panhandle Chefs De Cuisine

Ad Astra Books & Coffee House

Air & Fire Systems

Michelle Albertin

Josie Allen

Amarillo Area Foundation

Amarillo National Bank

American Saddlebred Association of Kansas

Andover United Methodist Church

Rich Andres

Anonymous

Jim Archer

Michael Armstrong

Sharon Atherton

Atmos Energy Corporation

Teri Augustus

Bailey Co. Child Welfare Board

Tina Baldwin

Carissa Baldwin-McGinnis

John Ballinger

Erin Baxter

Timothy Beard

Mike Berkley

Frank Bertucci

Mark Bidell

Craig Biggs

Virginia Bird

Donn Bischoff

Edwina Blair

Adrienne Bond

Boxum & Associates Insurance Agency

Bria Boykins

Alicia Broughton

Genevieve Brown

Joseph Brown

Kristina Brown

Mark Brown

Shayna Brown

Amanda Broxterman

Patrick Bryant	Ellis, Richard	Tracy Hervey
Robert Bux	William Fickling	Conrad Hirschman
Mark Byers	Fidelity Bank	Carol Hobbs
Carlos and Julianna Caguiat	Fidelity Charitable	Patrick Howell
CareSource	Finnup Foundation	HUB International Limited,
Diane Carver	Thomas Frankenfield	Sandy Huddleston
Elizabeth Castonguay	James Galligan	Anders Johansson
Castro Co. Child Welfare Board	Justin Gamboa	John K. Saxman, Jr. Charitable Trust
Elizabeth Cecil-Lanning	Cristian Garcia	Carol Junk
D. B. Chaffe	Gordon Gardiner	P. David Kearns
Kenneth Choffel	Jennifer Garlett	Kelly Keller
City Bank	Gary R. and Victoria F. Smith Charitable Trust	Kendra Scott
William Clark	Mary Gaston	David Kent
Collier Community Foundation	Gloria Hagan	Knights of Columbus Foundation of Mississippi, Inc.
Dawn Collins	Good Shepherd Episcopal Church	Kroger Community Rewards
Community Partners of Lubbock	Grace Episcopal Church	Lamb Co. Child Welfare Board
Kendra Conard	Greater Salina Community Foundation	Corlene Lange
Davette Cooper	Greater Twin Cities United Way	Joan Lewis
Randy Cormack	Mark Gruenthal	LOE Financial Group/Primerica
Jane Cory	H.E. Butt Grocery	Lynn Co. Child Welfare Board
Cox Charities of Kansas	Todd Hadnot	Terry Mar
Crosby Co. Child Welfare Board	Hale Co. Child Welfare Board	Maranatha Church
Nancy Dalton	Hampson, Derek and Connie	Lesley Markham
Diamondback Energy	Doris Harder	Nicole McCauley
Dorothy Conkey Estate	William Haynes	John McDowell
Jason Drayer	Helen Adams Hamilton Endowment Fund	Amber McElduff
Edward J. Vavra Estate	Martin Helget	Lacey McKay

Cleo McPherson
Virginia T. Means
Jill Miller
Lyle Miller
Mischel Miller
Nancy Miller
Moore Properties
Jay Mower
Muchnic Foundation, The
Nancy Mullen
David Muller
National Beef Packing CO., LLC
Linda Nelson
Network for Good
Raymond Nunweller
Martha Oehler
Arvid Olson
Marjorie Osterhoudt
Alice Parsons
Denise Peine
Perry Peine
Phil's Golf Karts
David Pierson
Rex Quinn
Tom Ragland
Cory Rathbun
Karen Redwine

Stephen Renich
Charles Renz
Judy Rinker
Paul Roman
Royal Neighbors of America
Abbey Rupe
Melville Sahyun
Saint Francis Community Services of Texas
Saint James Episcopal Church
Salina Elks Lodge #718
Salina Scale Sales & Service, Inc.
Sand Springs Lodge, No. 475
Sarah Sanders
Sara DeCoursey Ruth Trust
Scheels
Scott Community Foundation
Stephenie Slaight
Micah Smith
Spirit AeroSystems
St. Jude's Episcopal Church
St. Michael's Episcopal Church
St. Peter's Episcopal Church
St. Stephen's Episcopal Church
Matt Stephens
Keith Stevens
Ariel Suelter
Sunflower Foundation

Texas Alliance of Child and Family Services
The Bernard and Audre Rapoport Foundation
The Community Foundation of West Texas
Therapy 2000
Think of Us
Thrivent Charitable Impact & Investing
Anthony Tomaino
Claudette Tullis
Ella Umphrey
Vexus Fiber
Voeltz-Lockhart, Linda
W/C Soule Family Foundation
Joe Walters
Thomas Warren
Watson Electric, Inc.
Jeffrey Watson
Richard Weidler
Western Capital Resources
Whole Kids Foundation
Wichita Community Foundation
Larry Willis
Veda Wilson
Sherry Wohler
Joseph Woodford
Jeanette Yarbrough
Donald Zdancewicz
Kim Zinszer



Providing healing and
hope to children and families.

MISSION

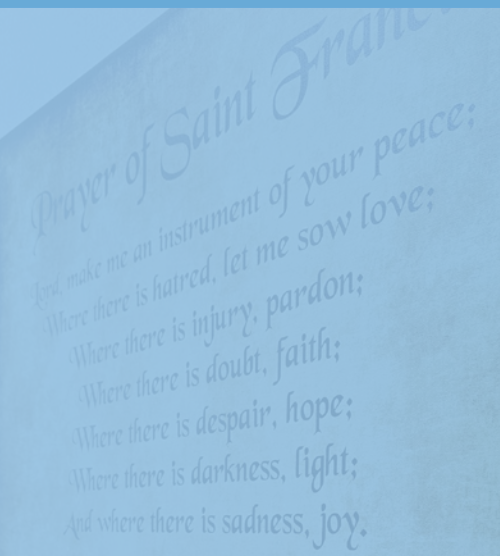


Transform lives and systems.

VISION

Act with Integrity.
Perform Quality Work.
Treat all with Respect and Dignity.
Empower Change.
Innovate for Excellence.

VALUES



Prayer of Saint Francis
Lord, make me an instrument of your peace;
Where there is hatred, let me sow love;
Where there is injury, pardon;
Where there is doubt, faith;
Where there is despair, hope;
Where there is darkness, light;
And where there is sadness, joy.